



Governors' Annual Report to Parents 2021-2022

Message From The Chair of Governors

On behalf of the Governing Body, it is my pleasure to present our annual report to parents. Following the difficult Covid-19 period, it is great to see normality return to school, including welcoming parents to the Christmas concerts. It is a wonderful to see the school implementing the new Curriculum for Wales to provide great learning opportunities for our children. Thank you very much to Miss Downes and the whole team of staff at Ysgol Gymraeg Tonyrefail.

I wish you a happy and peaceful Christmas.

Andrew Gould.



Ysgol Gynradd Gymraeg Tonyrefail



Clerk to the Governing Body

The Clerk to the Governing Body is Mrs Gaynor Davies, Director of Education and Inclusion, Ty Trevithick, Abercynon, Mountain Ash, CF45 4UQ.

Chairperson of the Governing Body

The Chairperson of the Governing Body is Mr Andrew Gould c/o Ysgol Gynradd Gymraeg Tonyrefail, Martin Crescent, Tonyrefail, Rhondda Cynon Taf, CF39 8NT.

Name	Category of Governor	Appointed By	Retirement Date
Mrs H Prosser	LEA	Council Members	19/11/2023
Mrs B Fletcher Mrs A Phillips Mrs B Cameron Mrs A Spooner	Parent	Parents	10/02/2024 03/11/2024 20/03/2026 31/10/2026
Mr A Gould Mr L Owen Mrs D Walters	Community Governors	Governors	19/11/2026 23/11/2025 13/10/2024
Cllr J Abbott	Minor Authority Governor	Town/Community Council	31/08/2023
Miss C Hughes	Teacher	Teaching Staff	09/10/2025
Mrs S Jones	Staff	Non-Teaching Staff	23/09/2024
Miss N Downes	Headteacher		

When fully constituted this governing body is made up as follows:

- 3 L.A. Representatives
- 4 Parent Governors
- 3 Community Governors
- 1 Minor Authority Representative
- 1 Teacher Representative
- 1 Support Staff Representative
- 1 Head Teacher



2021-2022 School Development Plan

PRIORITY 1	<u>Continue to raise standards in literacy throughout the school</u> Comparative judgement used to develop writing skills. Llwyfan Llafar used to promote Welsh oracy skills. Ethos of reading for pleasure is continuing to grow and develop within the school.
PRIORITY 2	<u>Embedding the Curriculum for Wales firmly throughout the school</u> Further Inset training days were held to prepare for the implementation of Curriculum for Wales. Professional development of school staff Teachers have worked on the six areas of learning in the curriculum with the cluster schools. Stakeholders were asked to contribute to the school vision Embed teaching and learning strategies throughout the school
PRIORITY 3	<u>Ensure that the requirements of the new ALN Act are effectively established in the school</u> Staff have familiarised themselves with the requirements of the new ALN Act Worked with all stakeholders to ensure good practice Bespoke training undertaken and support given
PRIORITY 4	<u>The emotional well-being of pupils and staff at the school</u> Provisions introduced to help pupils emotionally have been monitored and refined. Work has been undertaken to develop the school's green spaces. School yards have been developed into more attractive areas for the pupils. Pupil voice.

School Performance Data

In line with the regulations, this information is not provided due to the COVID-19 pandemic restrictions.

Financial Statement

Enclosed, as appendix A is a copy of the school's financial statement for the Financial Year 2021/22.

Attendance Information

In line with the regulations, this information is not provided due to the COVID-19 pandemic restrictions.

Ysgol Gynradd Gymraeg Tonyrefail



School News

Let's Count – Census Launch

As part of the prize for winning the 'Let's Count!' competition in 2021 run by the Office for National Statistics (ONS) - Year 6 pupils, as shown below, were chosen to announce the population figure for Wales for 2021

Out of 250 entries the school won the top prize in Wales and the second prize across England and Wales for our project. We also received STEM equipment as part of our prize.



National Museum of Wales & The Edina Trust Spring Bulb Project

Year 5 & 6 pupils continued with the Spring Bulb Project with the National Museum of Wales and the Edina Trust, recording the effect of global warming on the growth of bulbs.

University of Cardiff – Learning Project

Mr Hughes' class worked on a project with Cardiff University's School of Psychology Department. The children took part in workshops researching how children learn best and what learning environments they prefer.

RCT Sport Grant

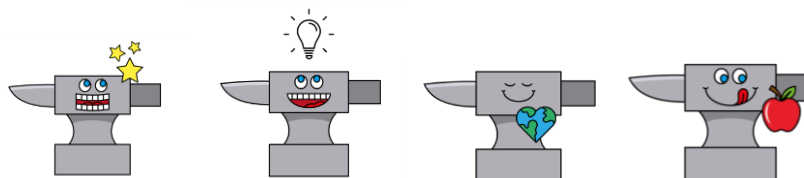
Successful in our bid to win a £250 sports grant from RCT Sports. The money was spent on buying new sport equipment for the school.

Curriculum

We have continued to work both as a school and as a cluster to ensure our readiness for the Curriculum for Wales to be implemented in September 2022. The curriculum is based on the 4 purposes and 6 Areas of Learning and Experience. The curriculum is mainly taught thematically – where this is appropriate for the subject matter and skills being taught. We use a variety of teaching and learning methods depending on the nature of the task.

Four Purposes

- Ambitious and capable learners: who are ready to learn throughout their lives
- Enterprising, creative contributors: who are ready to play a full part in life and work
- Ethical, informed citizens: who are ready to be citizens of Wales and the world.
- Healthy, confident individuals: who are ready to lead fulfilling lives as valued members of society



Six Areas of Learning

- Expressive Arts
- Health and Well-being
- Humanities
- Languages, Literacy and communications
- Mathematics and Numeracy
- Science and Technology

Additional Learning Needs

The School's policy for the identification, assessment and provision for pupils with Additional Learning Needs is consistent with the requirements of the Additional Learning Needs Code for Wales (approved by the Senedd on 23rd March 2021) under section 4 of the Additional Learning Needs and Education Tribunal (Wales) Act 2018. The School's Additional Learning Needs Co-ordinator (ALNCo) works closely with all other members of staff to ensure that individual educational plans are developed and implemented to meet the needs of pupils, appropriate to those who require them.

The ALNCo also liaises with all members of staff, to ensure that the progress of all pupils is regularly monitored and assessed and to ensure that each pupil reaches his or her potential.

During the current academic year, on the date of the PLASC census:

- 0 pupils were on School Action/Early Years Action.
- 0 pupils were on School Action Plus/Early Action Plus (including those with Notes in Lieu).
- 0 pupils were undergoing Statutory Assessment.
- 1 pupil has a statement of Additional Learning Needs.

During the 2021-2022 financial year £36,597.92 was allocated to meet the requirements of pupils with Additional Learning Needs. In addition, the Local Authority provided additional support for 9 pupils at the School Action Plus stage.

There were no changes to the policy during the 2021-2022 academic year.

Access for Disabled Pupils

The governing body is mindful of the requirements of the Disability Discrimination Act (DDA) 1995 and The Special Needs and Disability Act (SENDA) 2005 in drawing up the School Development Plan/Post Inspection Action Plan, and the day-to-day operation of the whole site.

The school is committed to ensuring that all pupils are able to participate in the school curriculum and (where they desire) in activities such as after school clubs, leisure/sporting events and educational visits. All aspects of accessibility, including access to written information are included in the planning process.

The Authority has in place an Accessibility Strategy and in line with this strategy has had an audit of the school site undertaken, as part of an Authority wide brief, to identify any potential barriers and (ultimately) improve the access to the school.

Fabric of the Building & Provision of Toilet Facilities

The building is generally in a good state of repair. Over the past year the following refurbishment/repairs have been carried out:

- Resurfacing of soft play area on the Meithrin & Derbyn yard
- Meithrin & Derbyn yard extended
- Canopy installed on the junior yard
- Games and learning activities painted on the yards – the children decided on the activities they wanted

Our school provides sufficient toilets for the number of pupils on roll. These toilets are cleaned on a daily basis.

Use of the Welsh Language – Communication

Welsh is the official language of schoolwork, and the children are taught in a completely Welsh environment. Our aim at Ysgol Gymraeg Tonyrefail is to ensure that all pupils, whatever their nationality, ability, religion or cultural background, receive a wide and balanced curriculum that is differential and purposeful. English is taught formally to pupils from Year 3 onwards. All pupils receive equal opportunities and the chance to be actively involved in the school's social and cultural life.

We are working towards our Gwobr Aur (Gold Award) Siarter Iaith

Welsh Language Charter:

Seren and Sbarc



Community Focused Schools

A community-focused school is one that: 'provides a range of services and activities', often beyond the school day, to help meet the needs of its pupils, their families and the wider community.

The development of community-focused schools is not just a short-term project or initiative, but a real opportunity for schools and communities to work together in new ways for the future benefit of children, young people and adults.

At our school we have:

- Breakfast Club
- Wraparound and after school care service provided by Flourish Cymru
- Cylch Meithrin Cwm Elai on site which is a Flying Start and a Registered Education Provider

The school offers a range of afterschool clubs for pupils

- Urdd clubs – Tuesday
- Coding & craft - Thursday

The school has close links with the following groups in the community:

Cylch Meithrin Cwm Elai & Ysgol Llanhari, The Savoy Theatre, The Lighthouse Project, Gilfach Goch Community Centre, St David's Church, Focal Point, U3A, Police Force, School Nurse, Fire Brigade, Leisure Centre, Tesco, Spar, Tonyrefail Skate Park.

Supporting Charities

The school supported the following charities during the 2021-22 academic year:

- Food collected during the Harvest Festival was donated to the Light House Project and Gilfach Goch Community Centre Food Bank
- Children in Need £216
- Save the Children – Christmas Jumper £80
- Red Nose Day - £67.40
- Down Syndrome Awareness Day - £67.40

Review of School Policies

The school has a large number of Policy documents covering both curriculum and non-subject areas. These documents are constantly reviewed/revised by staff/governors to incorporate changing trends and legislation. Further information is available by contacting the Headteacher during school time.

Following Policies were reviewed during the last academic year:

Safeguarding, Privacy Notices, Health & Safety

Term Dates and Session Times 2022-2023

The school day is arranged as follows:

	Start Time	Lunch Time	Finish Time
Years 3 - 6	9:00am	12:15 – 1:15pm	3:30pm
Years 1 & 2	9:00am	12:00 – 1:00pm	3:30pm
Derbyn	9:00am	11:45 – 1:00pm	3:10pm
Meithrin	9:00am	11:30 – 12:00pm	12:00pm & 3:00pm

A copy of the terms and Holiday dates for the 2022-2023 academic year is listed below. School will also be closed for INSET days on 05.09.22, 28.11.22, 23.12.22, 24.7.23 with one further INSET days to be arranged during the academic year. The Welsh Government may decide to allocate additional INSET days - schools will be informed of these at the appropriate time. Any closure(s) for election purposes are to be balanced during the academic year.

Term	Begin	Half term		End	No. of School
		Begin	End		
Autumn 2022	Mon 5 Sept 2022	Monday 31 Oct 2022	Friday 4 Nov 2022	Friday 23 Dec 2022	75
Spring 2023	Monday 9 Jan 2023	Monday 20 Feb 2023	Friday 24 Feb 2023	Friday 31 Mar 2023	55
Summer 2023	Monday 17 April 2023	Monday 29 May 2023	Friday 2 Jun 2023	Monday 24 July 2023	64

Inset Days
Monday 5 th September 2022
Monday 28 th November 2022
Friday 23 rd December 2022
Monday 24 th July 2023
1 further INSET day to be arranged

Admission/Transition Arrangements

The County Borough Council is the Admissions Authority for all schools (other than Church schools where the schools governing body is the admissions authority) within the Authority's boundary. The school's admission arrangements are, therefore, operated in line with the Authority's policy on school admissions which is contained in the publication Starting School book. The book is made available to parents at the point of their application for their child's admission to school. The contents of this book can also be accessed online on the Authority's website.

Pupils will usually remain in the school until they complete year six and then transfer to secondary school. This school is a feeder school for Ysgol Llanhari, however, pupils may apply to attend any secondary school they choose subject to compliance with the Authority's admissions policy.

School Leavers

18 pupils moved on to Secondary Education at the end of the Summer Term 2022.

The pupils at the school visit Ysgol Llanhari regularly throughout Year 6 as part of their transition programme and once in year 5. Year 6 were visited Ysgol Llanhari on 4 occasion taking part in different themed activities and workshops. Past pupils from the school – came to share their experience and answer questions about starting at Ysgol Llanhari in Year 7.

Dosbarth 2023



Sporting Aims and Achievements

Sporting activities were impacted to a lesser degree, due to Covid 19, during the 2021-22 academic year. Pupils took part in numerous sporting activities throughout the year including: swimming and basket-ball lessons for all KS2 pupils. The football, and netball teams have competed in numerous tournaments, and in the RCT and Urdd Cross Country Competition. Sporting activities also take place in afterschool clubs, training workshops, outdoor learning, School Sports Day, Team Building Skills.

We have two RCT Sport Ambassadors who help arrange sporting activities within the school.

Year 6 pupils went to 'Call of the Wild' on a residential outdoor activity course.



Healthy Eating

We promote healthy eating within the school and we encourage children to bring fruit / vegetables and a still drink or water to have during playtimes. The school's policies and schemes of work promote healthy eating and drinking.

We have achieved the 5th step in the Healthy Schools accreditation.



Ysgol Gynradd Gymraeg Tonyrefail

PROVISIONAL FINANCIAL STATEMENT FOR 2021/2022

<u>EMPLOYEE COSTS</u>	<u>Total Spent</u>
TEACHERS (including Headteacher/Supply/Reading support)	£469,052
MANUAL WORKERS (Caretaker/Supervisory Assistants/Cleaners)	£63,561
A.P.T. + C (School Clerks/Nursery Nurses/School Aides)	£189,299
.	
<u>PREMISES RELATED</u>	
REPAIRS TO BUILDING/SITE, (INCLUDING GROUNDS MAINTENANCE/SECURITY)	£18,675
ENERGY	£18,314
RATES	£24,075
WATER	£5,230
CLEANING MATERIALS	£2,014
<u>SUPPLIES, SERVICES AND OTHER EXPENSES</u>	
SCHOOL EQUIPMENT AND FURNITURE	£48,175
POSTAGE	£31
TELEPHONES	£1,838
INSURANCE	£9072
CLERKING GOVERNING BODY/FINANCIAL ADMINISTRATION/PERSONNEL	£8,140
USE OF DISTRICT FACILITIES	£2,110
MISCELLANEOUS	
TOTAL:	<u>£8591586</u>
<u>INCOME</u>	
MISCELLANEOUS	£195,598
TOTAL	£195,598