



## Governors' Annual Report to Parents 2023-2024

### Message From The Chair of Governors

*On behalf of the Governing Body, it is my pleasure to present our annual report to parents for the 2023-24 academic year.*

*2024 was an extra special year, it was fantastic to see so many pupils and parents of the school enjoying the National Eisteddfod in Pontypridd, with former pupil Gwynfor Dafydd winning the National Eisteddfod crown.*

*There has been a hive of activity in and around the school this term, with pupils collaborating with local businesses and participating in a very successful Fairtrade project. The pupils have benefitted from many real-life experiences, through visitors, like Guide Dogs for the blind and trips to the debating chambers of the Senedd for example. The school continues to raise awareness of the importance of protecting our planet and of the importance of the health and wellbeing of the pupils through different activities and projects.*

*The school has further strengthened its relationship with the community by opening its doors for coffee mornings and fetes, raising money for worthy causes and raising the profile of the Welsh language in the community. A massive thank to Miss Downes and the whole team of staff at Ysgol Gymraeg Tonyrefail.*

*I wish you a happy and peaceful Christmas.*

Luke Owen





## Clerk to the Governing Body

The Clerk to the Governing Body is Mrs Gaynor Davies, Director of Education and Inclusion, Valleys Innovation Centre, Navigation Park, Abercynon, CF45 4SN.

## Chairperson of the Governing Body

The Chairperson of the Governing Body is Mr Luke Owen c/o Ysgol Gynradd Gymraeg Tonyrefail, Martin Crescent, Tonyrefail, Rhondda Cynon Taf, CF39 8NT.

<b>Name</b>	<b>Category of Governor</b>	<b>Appointed By</b>	<b>Retirement Date</b>
Mrs H Prosser	<b>LEA</b>	<b>Council Members</b>	19/11/2027
Mrs B Cameron	<b>Parent</b>	<b>Parents</b>	20/03/2026
Mrs A Spooner			31/10/2026
Mrs D Barwick			07/02/2028
Mrs A Phillips			19/11/2028
Mr L Owen	<b>Community Governor</b>	<b>Governing Body</b>	23/11/2025
Mrs L Middleton			16/07/2028
Mrs D Walters			13/11/2028
Cllr J Abbott	<b>Minor Authority (If applicable)</b>	<b>Community Council</b>	31/08/2027
Miss C Hughes	<b>Teacher</b>	<b>Teaching Staff</b>	09/10/2025
Mrs S Jones	<b>Staff</b>	<b>Non-Teaching Staff</b>	03/11/2028
Mrs N Downes	<b>Headteacher</b>		

## **When fully constituted this governing body is made up as follows:**

- 3 L.A. Representatives
- 4 Parent Governors
- 3 Community Governors
- 1 Minor Authority Representative
- 1 Teacher Representative
- 1 Support Staff Representative
- 1 Head Teacher



## 2023 -2024 School Development Plan

The School Development Plan for the 2023-2024 academic year was approved by Governors and were regularly reviewed by the Governing Body.

<b>PRIORITY 1</b>	<b>Science and Technology: Developing our pupils' Science and Technology skills</b> <ul style="list-style-type: none"> <li>• Ensured sufficient opportunities for pupils to develop their scientific and technological skills across the school, including entrepreneurship Christmas Decoration Task</li> <li>• Review of the implementation of relevant strands across the Progression Steps. Key questions reviewed</li> <li>• Scrutiny of books</li> <li>• Continuing of cluster schools' collaboration within Areas of Learning and Development</li> </ul>
<b>PRIORITY 2a</b>	<b>Languages, Literacy and Communication</b> <b>Reading – ensuring consistency and progression across the school</b> <ul style="list-style-type: none"> <li>• National Test reading and school test data analysed</li> <li>• Effectiveness of the Reading Carousel provision in the classes reviewed</li> <li>• Tric a Chlic training for staff</li> <li>• Darllen.Co reading resource purchased - children have a reading resource they can use at home and at school</li> </ul>
<b>PRIORITY 2b</b>	<b>2b Writing: developing our pupils' creative writing skills and ensuring opportunities for extended writing across the curriculum</b> <ul style="list-style-type: none"> <li>• Creative writing training / workshops organised for staff</li> <li>• Opportunities for creative writing and extended writing scrutinised</li> <li>• Poetry Workshops for pupils – developed the use of poetry as a means to stimulate creative writing</li> </ul>
<b>PRIORITY 3</b>	<b>Self and Peer Assessment</b> <ul style="list-style-type: none"> <li>• Books scrutinised to see opportunities for / examples of self-assessment and peer assessment</li> <li>• Consistency and development in the opportunities for self and peer assessment in the 3 Progression Steps</li> <li>• Pupils aware of their targets for improving their work and that the feedback given to pupils is robust</li> </ul>
<b>PRIORITY 4</b>	<b>Health and Wellbeing</b> <ul style="list-style-type: none"> <li>• Percentage of pupils' attendance still below the target of 93%</li> <li>• Ethos of growth mindset in the classrooms - where children develop persistence and tenacity in carrying out their work</li> <li>• Children's independence skills have grown in Progression Step 1 &amp; 2</li> </ul>

	<ul style="list-style-type: none"><li>• Continuous work being undertaken on refining provision for improving pupils' emotional well-being</li></ul>
<b>PRIORITY 5</b>	<b>Continue with the work of empowering the school's Self-Evaluation Processes</b> <ul style="list-style-type: none"><li>• Self- evaluation processes reviewed and updated including the role of the Governors in the self evaluation process.</li></ul>



## School News



### **National Museum of Wales & The Edina Trust Spring Bulb Project**

Year 5 & 6 pupils were highly commended for their Spring Bulb Project in conjunction with the National Museum of Wales and the Edina Trust, recording the effect of global warming on the growth of bulbs.

### **Christmas Entrepreneurship Project**

Our entrepreneurship project to design, create and sell Christmas decorations was extremely successful. A range of skills were developed during the process of creating the decorations. Children have produced a profit and spent the profit on resources for their classes.

### **School Choir**

Our newly formed School choir took part in two successful local concerts to raise money for the National Eisteddfod.

### **Wellbeing**

The school's work on wellbeing in the classroom has been published as part of a research paper by Cardiff University.

### **Eisteddfod Genedlaethol Rhondda Cynon Taf**

Pupils in Years 5 & 6 took part in numerous poetry workshops with poet Elinor Wyn Reynolds to write poems about people's memories of the local area. The school took part in the opening ceremony of the Pabell Lân / Literacy Pavilion at the National Eisteddfod

### **RCT Sport Grant**

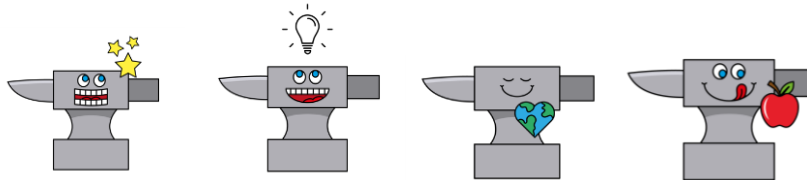
Successful in our bid to win a £250 sports grant from RCT Sports. The money was spent on buying new sport equipment for the school.

## Curriculum

We have continued to work both as a school and as a cluster in developing Curriculum for Wales. The curriculum is based on the 4 purposes and 6 Areas of Learning and Experience. The curriculum is mainly taught thematically – where this is appropriate for the subject matter and skills being taught. We use a variety of teaching and learning methods depending on the nature of the task.

### Four Purposes

- Ambitious and capable learners: who are ready to learn throughout their lives
- Enterprising, creative contributors: who are ready to play a full part in life and work
- Ethical, informed citizens: who are ready to be citizens of Wales and the world.
- Healthy, confident individuals: who are ready to lead fulfilling lives as valued members of society



### Six Areas of Learning

- Expressive Arts
- Health and Well-being
- Humanities
- Languages, Literacy and communications
- Mathematics and Numeracy
- Science and Technology

### **Additional Learning Needs**

The school's policy for the Assessment of and Provision for Pupils with Additional Learning Needs is summarised as follows:

The school's policy for the identification, assessment and provision for pupils with additional learning needs is consistent with the requirements of the Additional Learning Needs Code for Wales (approved by the Senedd on 23<sup>rd</sup> March 2021) under section 4 of the Additional Learning Needs and Education Tribunal (Wales) Act 2018.

The school's Additional Learning Needs Co-ordinator (ALNCo) works closely with all other members of staff to ensure that individual educational plans are developed and implemented to meet the needs of pupils, appropriate to those who require them.

The ALNCo also liaises with all members of staff, to ensure that the progress of all pupils is regularly monitored and assessed and to ensure that each pupil reaches his or her potential.

During the academic year 2023/2024 - 5 pupils were in receipt of an Individual Development Plan (IDP).

### **Access for Disabled Pupils**

The Governing Body is mindful of the requirements of the Equality Act 2010 and the Special Needs and Disability Act (SENDA) 2001 in drawing up the School Development Plan/Post Inspection Action Plan, and the day-to-day operation of the whole site.

The school is committed to ensuring that all pupils are able to participate in the school curriculum and (where they desire) in activities such as after school clubs, leisure/sporting events and educational visits. All aspects of accessibility, including access to written information are included in the planning process.

The Authority has in place an Accessibility Strategy Plan and in line with this strategy has had an audit of the school site undertaken, as part of an Authority wide brief, to identify any potential barriers and to improve the access to the school.

### **Fabric of the Building & Provision of Toilet Facilities**

The building is generally in a good state of repair. Over the past year the following refurbishment/repairs have been carried out.

Our school provides sufficient toilets for the number of pupils on roll. These toilets are cleaned on a daily basis. An additional cleaner has been employed since the start of the Covid 19 to clean the toilets/ classrooms regularly during the day.

## Use of the Welsh Language – Communication

Welsh is the official language of schoolwork, and the children are taught in a completely Welsh environment. Our aim at Ysgol Gynradd Gymraeg Tonyrefail is to ensure that all pupils, whatever their nationality, ability, religion or cultural background, receive a wide and balanced curriculum that is differential and purposeful. English is taught formally to pupils from Year 3 onwards. All pupils receive equal opportunities and the chance to be actively involved in the school's social and cultural life.

We are working towards our Gwobr Aur (Gold Award) Siarter Iaith

### **Welsh Language Charter:**

#### **Seren and Sbarc**



## Community Focused Schools

A community-focused school is one that provides a range of services and activities, often beyond the school day, to help meet the needs of its pupils, their families and the wider community. Across Wales many schools already provide some community services including adult education, study support, ICT facilities and community sports programmes.

The development of community-focused schools is not just a short-term project or initiative, but a real opportunity for schools and communities to work together in new ways for the future benefit of children, young people and adults.

At our school we have:

- Breakfast Club
- Wraparound and after school care service provided by Flourish Cymru
- Cylch Meithrin Cwm Elai on site which is a Flying Start and a Registered Education Provider
- Welsh lessons for parents/ grandparents are being taught by University of South Wales weekly at the school

### **The school has close links with the following groups in the community:**

Cylch Meithrin Cwm Elai & Ysgol Llanhari, The Savoy Theatre, St David's Church, Tonyrefail & Gilfach Goch Community Councils, Caffi ar Ben y Byd, Focal Point, U3A, Gilfach Goch Community Centre, Community Police Force, School Nurse, Fire Brigade, Leisure Centre, Coop, Spar, Tonyrefail Skate Park.

### **Supporting Charities**

The school supported the following charities during the 2021-22 academic year

- Children in Need - £220
- Macmillan - £160
- Food collected during the Harvest Festival was donated to local food banks
- Eisteddfod Genedlaethol Rhondda Cynon Taf £322.50

### **School Performance Data**

The New Curriculum for Wales provides progression information for the pupils. National tests for years 2 to 6 are still undertaken. The school is performing at a good level.

### **Financial Statement**

Enclosed, as appendix A is a copy of the school's financial statement for the Financial Year 2023/24. Further breakdown of the information is available upon request

### **Attendance Information**

The school attendance was 92.08% for 2023/24. The target for 2024/25 is 93%. Attendance of all pupils is closely monitored.

### **Review of School Policies**

The school has many policy documents covering both curriculum and non-subject areas. These documents are constantly reviewed/revised by staff/governors to incorporate changing trends and legislation. Further information is available on the school website or by contacting the Headteacher during school time.

## Term Dates and Session Times 2022-2023

The school day is arranged as follows:

	Start Time	Lunch Time	Finish Time
<b>Years 3 - 6</b>	9:00am	12:15 – 1:15pm	3:30pm
<b>Years 1 &amp; 2</b>	9:00am	12:00 – 1:00pm	3:30pm
<b>Derbyn</b>	9:00am	11:45 – 1:00pm	3:10pm
<b>Meithrin</b>	9:00am	Full time pupils 11:45 – 1:00pm	12:00pm & 3:00pm

A copy of the terms and Holiday dates for the 2023-2024 academic year is listed below. The Welsh Government may decide to allocate additional INSET days - schools will be informed of these at the appropriate time. Any closure(s) for election purposes are to be balanced during the academic year.

Term	Begin	Half term		End	No. of School
		Begin	End		
<b>Autumn 2024</b>	Mon 2 Sept 2024	Monday 28 Oct 2024	Friday 1 Nov 2024	Friday 20 Dec 2024	75
<b>Spring 2025</b>	Monday 6 Jan 2025	Monday 24 Feb 2025	Friday 28 Feb 2025	Friday 11 Apr 2025	65
<b>Summer 2025</b>	Monday 28 April 2025	Monday 26 May 2025	Friday 30 May 2025	*Monday 21 July 2025	55
					Total 195

<b>Inset Days</b>
Monday 2nd September 2024
Monday 30 <sup>th</sup> September 2024
Monday 21 <sup>st</sup> October 2024
Monday 6 <sup>th</sup> January 2025
Date to be confirmed
Monday 21 <sup>st</sup> July 2025

**Mon 2 Sept 2024 and \*Monday 21 July 2025** will be designated INSET days for **all** LEA Maintained Schools. The remaining three INSET days to be taken will be at the discretion of each individual school following appropriate consultation with staff. **\*It is intended that this INSET Day will either be taken on Mon 21 July 2025 or at an alternative time for example in the form of twilight sessions.**

All schools will be closed on **Monday 5 May 2025** for the May Day Bank Holiday.

Significant dates:	Christmas	Wednesday 25 December 2024
	Easter	Good Friday 18 April 2025
		Easter Monday 21 April 2025
	May Bank Holidays	Monday 5 May 2025
		Monday 26 May 2025

The Welsh Assembly Government may decide to allocate additional INSET days, schools will be informed of these at the appropriate time.

### **Admission/Transition Arrangements**

The County Borough Council is the Admissions Authority for all schools (other than Church schools where the schools governing body is the admissions authority) within the Authority's boundary. The school's admission arrangements are, therefore, operated in line with the Authority's policy on school admissions which is contained in the publication Starting School book. The book is made available to parents at the point of their application for their child's admission to school. The contents of this book can also be accessed online on the Authority's website.

Pupils will usually remain in the school until they complete year six and then transfer to secondary school. This school is a feeder school for Ysgol Llanhari, however, pupils may apply to attend any secondary school they choose subject to compliance with the Authority's admissions policy.

## School Leavers

21 pupils moved on to Secondary Education at the end of the Summer Term 2023.

Ysgol Llanhari cluster has a robust and effective Transition Policy. The pupils at the school visit Ysgol Llanhari regularly throughout Year 6 as part of their transition programme and once in year 5. Year 7 pupils also visit the school to talk with Year 6 pupils about Ysgol Llanhari. Modern Languages are taught to Year 5 a 6 in school on a weekly basis as part of the transition

## September 2023 Blwyddyn 6



## Sporting Aims and Achievements

Pupils take part in numerous sporting activities throughout the year including: swimming and basket-ball lessons for all Progression Stage 3 pupils, Year 2 pupils also receive basketball lessons.

The school's football, rugby and basketball teams competed in numerous tournaments.

Sporting activities also take place in afterschool clubs, training workshops, outdoor learning, School Sports Day and during Team Building activities.

We have two RCT Sport Ambassadors who help arrange sporting activities within the school.



## Healthy Eating

We promote healthy eating within the school and children are encouraged to bring fruit/vegetables and a still drink or water to have during playtimes. We are working on gaining the 6<sup>th</sup> step in the Healthy Schools accreditation.

Ysgol Gynradd Gymraeg Tonyrefail

## PROVISIONAL FINANCIAL STATEMENT FOR 2023/2024

<u>EMPLOYEE COSTS</u>	<u>Total Spent</u>
STAFFING COSTS INCLUDING SUPPLY	£835,639
<u>PREMISES RELATED COSTS</u>	
INCLUDES ENERGY, REPAIRS, CLEANING, BUILDING RELATED SLA's	£114,622
<u>TRANSPORT</u>	
INCLUDES INSURANCE, PETROL, TRAVEL CLAIMS	£0
<u>SUPPLIES AND SERVICES</u>	
INCLUDES CAPITATION, ICT, COURSES, PHOTOCOPYING, STAFF INSURANCE, SERVICE SLA's	£73,461
<u>GRANTS</u>	
EIG, PDG, EYPDG, PDGCLA	£124,570
<u>ADDITIONAL INCOME</u>	
INCLUDES WELSH GOVERNMENT GRANTS, MISCELLANEOUS, STAFF INSURANCE CLAIMS,	£16,986