



Llyfryn Teulu

Family Handbook



Bore da ~ Good Morning



Bore da / Good morning

Amser codi / Time to get up

Amser brecwast / Time for breakfast

Wyt ti eisiau...? / Do you want...?

Amser gwisgo / Time to get dressed

Beth sy'n bod? / What's the matter?

Ble mae dy fag? / Where is your bag?

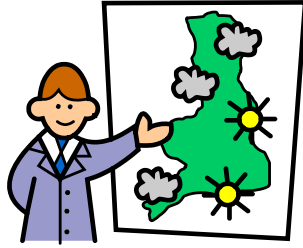
Wyt ti'n barod? / Are you ready?

Ydw / Nac ydw / Yes / No

Bant a ni / Off we go



Y Tywydd - The Weather



Sut dywydd yw hi heddiw?

How is the weather today?

Mae hi'n heulog / It's sunny

Mae hi'n wyntog / It's windy

Mae hi'n bwrw glaw / It's raining

Mae hi'n gymylog / It's cloudy

Mae hi'n bwrw eira / It's snowing

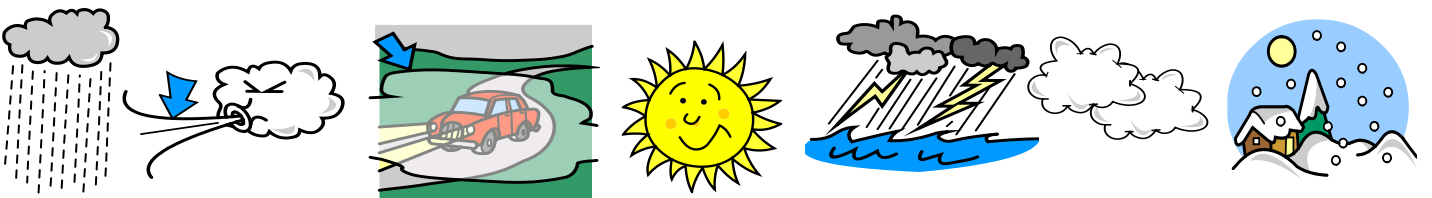
Mae hi'n niwlog / It's foggy

Mae hi'n rhewllyd / It's freezing

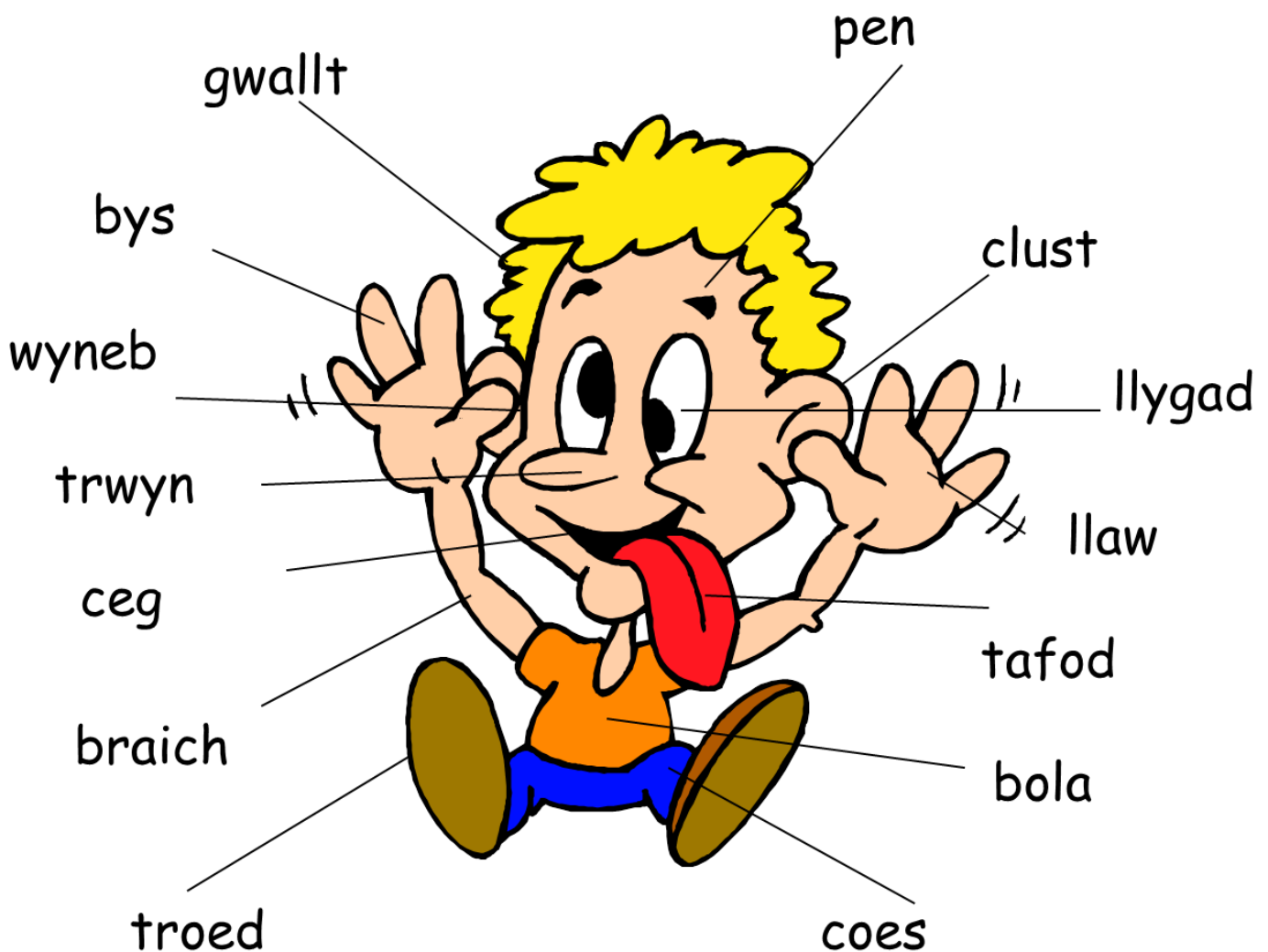
Mae hi'n wlyb / It's wet

Mae hi'n oer / It's cold

Mae hi'n boeth / It's hot



Dyma fi ~ This is me



Cân ~ Song

Dyma fi, dyma fi, dyma fi.

Dyma 'mhen fel y gwelwch chi

Gwallt, clust, llygaid del.

Trwyn bach smwt a cheg, wel wel!

Adref ~ At home



Pwy wyt ti? / Who are you?

...ydw i / I am....

Mam / mum dad / dad

mamgu / grandmother tadcu / grandfather

Wyt ti eisiau chwarae gyda...?

Do you want to play with?

Amser tacluso / Time to tidy up

Amser cinio / Dinner time

Amser te / Tea time

Amser gwely / Bedtime

Gaf fi...? / May I have...?

Cei/Na chei / Yes you may/No you may not

Mae gen i... / I have...

Oes gen ti...? / Do you have...?

Oes/Nac oes / Yes I have/No I haven't

Mynd allan ~ Out and about

Wyt ti eisiau mynd ...? / Do you want to go ...?

Ble ydyn ni'n mynd? / Where are we going?

Rydyn ni'n mynd... / We're going...

Ble mae...? / Where is...?

Dyma fe / Here it is!

Dyma fe/hi / Here he is/Here she is

Beth sydd yn y...? / What's in the...?

Es i... / I went



parc



traeth



sinema



siopa



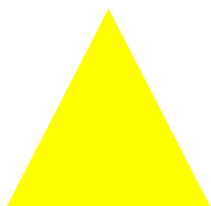
nofio



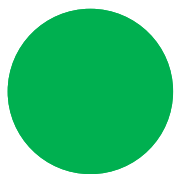
parti

Mynd i'r ysgol

Going to school



triongl



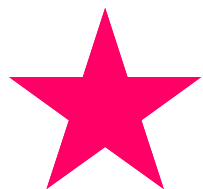
cylch



sgwâr



petryal



seren

0

sero

1

un

2

dau

3

tri

4

pedwar

5

pump

6

chwech

7

saith

8

wyth

9

naw

10

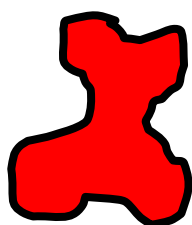
deg



glas



melyn



coch



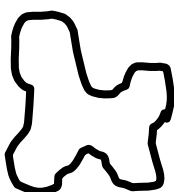
gwyrdd



pinc



oren



gwyn



porffor



brown



du

Dyddiau'r wythnos

Days of the week



Pa ddiwrnod yw hi heddiw? What day is it today?

Dydd Llun / Monday

Dydd Mawrth / Tuesday

Dydd Mercher / Wednesday

Dydd Iau / Thursday

Dydd Gwener / Friday

Penwythnos / weekend

Dydd Sadwrn / Saturday

Dydd Sul / Sunday

Amser Gwely ~ Time for Bed



Amser stori / Story time

Pa lyfr wyt ti eisiau? / Which book would you like?

Beth yw dy hoff stori? / What is your favourite story?

Rwy'n dy garu di / I love you

Nos da / Good night

Hwiangerdd—Lullaby

Heno, heno, hen blant bach,

Heno, heno, hen blant bach,

Dime, dime, dime, hen blant bach,

Dime, dime, dime, hen blant bach,

Gwely, gwely....Cysgu, cysgu...Fory, fory